



Connector tower, a presentation.

Connector telecom towers are tube masts guyed by riggings of spreaders and shrouds, which give an impression of a ship's rigging.

There are towers with a height up to 48 m. The Connector towers are built of steel tube units of 5-6 m, spreaders and steel-wire shrouds. Depending on its height and the wind load there are two masts tube dimension in use, 324 mm and 219 mm.

The most slender towers up to 36 m are not very heavy and therefore suitable for helicopter installation on small islands etc.

Feeders will be installed inside the mast tube. In- and outlet accesses will be decided according to the customer.

The towers are as standard hot dip galvanized. The mast tube and spreaders may be painted in C3-C4 according to customer. Ladders and antenna mounting hardware may be included according to the customer's specifications.

Prefabricated concrete foundations are also available.

Guide lines before use

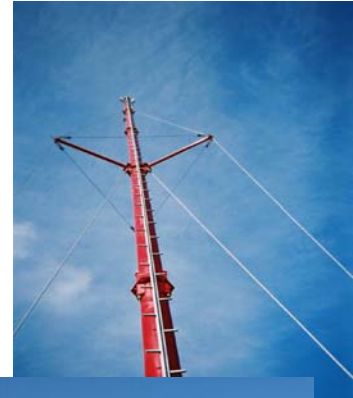
Designpartners will do all the design and specifying. Every delivery commitments are supplied with all necessary instructions.

Delivery commitments

The Connector towers give a profit tanks to its uncomplicated design and use of well-known components. The tower will be erected in a short time. There is a compact transportation volume as all tube units max are of 5.0 to 6.0 m.

Other presentations of Connector poles and masts

- Connector tower.
- Connector masts.
- Connector monopole.
- Connector roof poles.
- Connector flexpoles 0,2 - 0,3 m
- Connector flagpoles.
- Connector antenna package 0.2 - 0.3 m



*Design, sales and manufacture:
Connector masts are marked by Designpartners.
Designpartners, Badhusgatan 10. S 722 15
Västerås
Tele: 004621 18 36 49 or 18 36 06
Fax: 004621 13 22 64
e-post: connector@designpartners.nu
Homepage: www.designpartners.nu*

Design facts:

General:

The Connector Tower is one of the Connector tubular mast products. All towers are custom designed within ranges below.

The antennas mostly are fixed visibly closed to the tube. At the top the antennas may be covered inside a plexiglas tube either on site or pre-built in as a Connector Antenna package.

Diameter:

From 324 mm to 219 mm as mast tubes and 90 mm as the top spire.

Loads:

Each tower is designed and checked according to its height and actual wind load.

Heights:

Max height is recommended to be about 48 m. There will be one, two or three shroud levels depending on height and wind load.

Painting:

Hot dip galvanized or painted according to the Duplex method C3-C4.

Foundation:

Drawing of in site cast concrete foundations is included. Prefabricated concrete foundations are also available.

Material:

Steel tube according to SS-EN.

Steel-Wires 19- and 7-wire parts galvanized SS4240804 and -06.

